

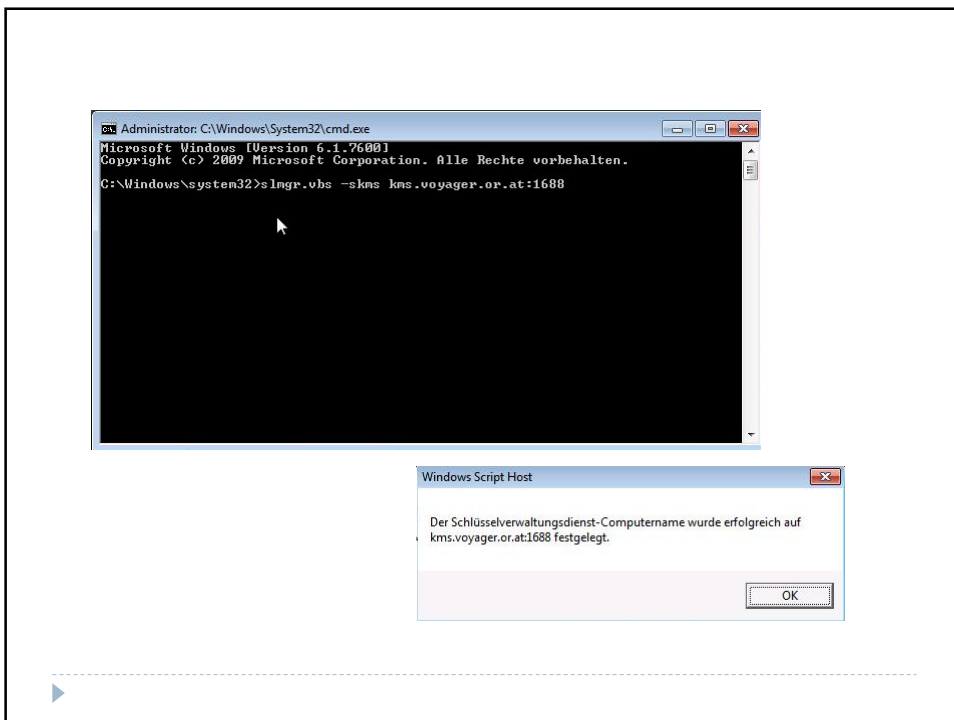
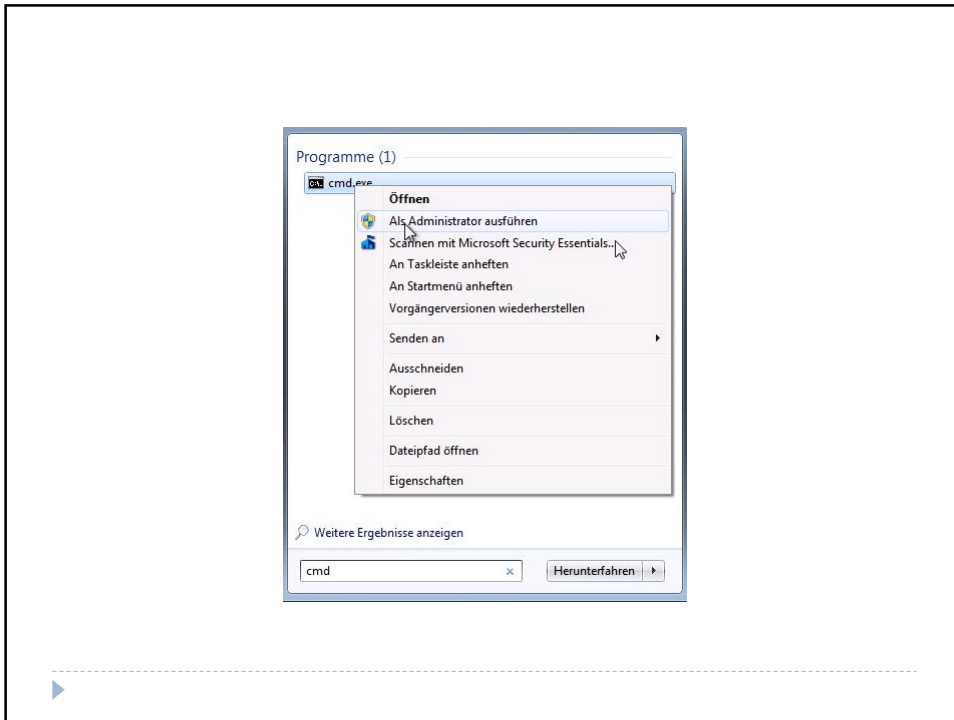
Windows 7 Aktivierung

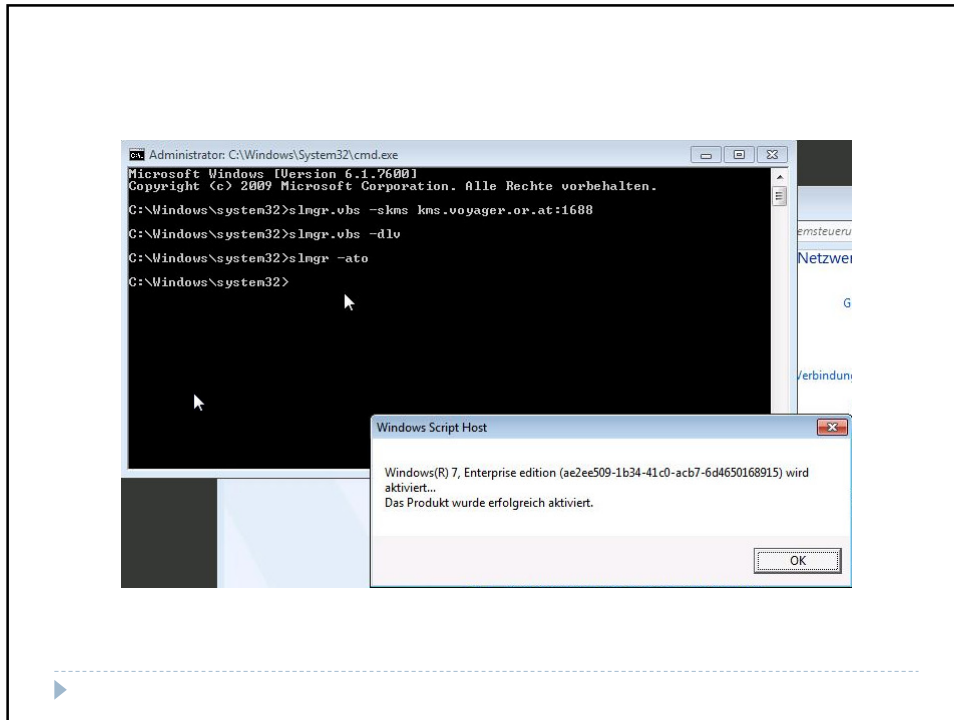
via bestehendem VPN Tunnel

KMS

- ▶ **Aktivierung am bm:ukk**
 - ▶ Einrichten eines VPN Tunnels
 - ▶ http://www.microsoft.com/austria/education/msach_kms.aspx
 - Für Linux
 - Für ISA 2005 ISA 2008 (Forefront TMG)
- ▶ **Am client:**
 - ▶ `slmgr /skms kms.voyager.or.at:1688`
 - ▶ `slmgr /skms 144.65.19.33:1688`
 - ▶ `slmgr /ato`







Nach Serverinstallation - kms

